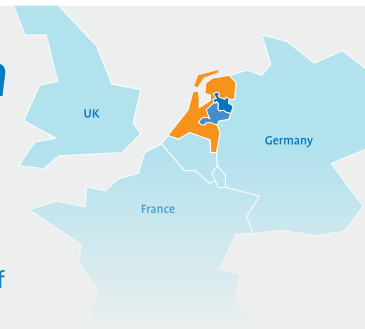




No. 1 knowledge-intensive agtech ecosystem

Tiny country **The Netherlands** is changing the way the world farms, combining business and practical experience with leading research and developments (source: National Geographic). East Netherlands is home to **number 1 Food and Agriculture University Wageningen** and the **most entrepreneurial university of the Netherlands, Technical University of Twente**. Foodvalley, around Wageningen, tops the list of appealing investment regions for many agrifood innovators worldwide and has an ideal mix of multinationals, small and medium enterprises, startups and research institutes.



East Netherlands: a highly innovative agtech cluster

“The choice for The Netherlands was based on several reasons: the level of education, a multilingual population, easily accessible by road, train and air and very well connected to the rest of Europe. The Netherlands is furthermore frontrunner in agriculture, with Wageningen University and Research (within 20 minutes drive from Heumen) as its beating heart.”

Alfred Rol
Regional Business Manager - EMEA at Ag Leader

“The Netherlands has a historically strong position in international vegetable breeding, and Wageningen is a globally-recognized center for plant science.”

Paul Degreef
Managing director KWS Vegetables BV, Wageningen

M Business climate



Wageningen and the surrounding **Foodvalley** are home to a vibrant, highly educated, international research community dedicated to food, nutrition and agricultural sciences. With more than 3,000 agrifood related companies, institutes and a community of more than 10,000 agrifood experts from over 110 nationalities, it has become an internationally acclaimed R&D hotspot. **Wageningen University & Research** forms the center of an agrifood research hub.



Three Research Universities and five Universities of Applied Sciences educate multi-skilled talent for future challenges in agrifood such as nutrition, biobased materials, agtech and protein transition.



Companies

AgLeader, JoinData, Nedap, AgriFirm, Dorset, Sieplo, Lely, Jansen Poultry Equipment, AgroVision, Greefa, The Drone Bird Company, Osse group.

Home to Japanese companies like: Asahi/Grosch, Kubota, Kikkoman, Toray, Toyota Material Handling, Teijin Aramid, Hitachi, Hosokawa Micron, Sekisui Plastics, Omori, Sakura, Shimano.



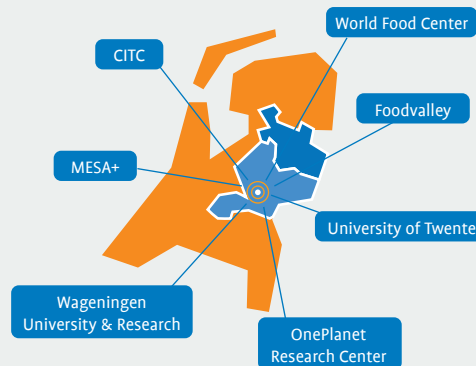
Open and innovative

Joint research programs with the Universities of Wageningen, Nijmegen and Twente and top-class research institutes, like imec, Mesa+, Chip Integration Technology Centre (CITC) and LEO Center for Service Robotics offer new smart agriculture solutions.



Most innovative country in the world
GII 2017-2019

Excellence in Agriculture and Tech



Business support

Foodvalley – the primary knowledge intensive agrifood ecosystem in the Netherlands.

Shared research facilities provide access to state-of-the-art facilities, e.g. Netherlands Plant Eco-phenotyping Centre (NPEC).

NARO, National Agriculture and Food Research Organization, Presence of liaison officer at Wageningen Campus.

CITC, Chip Integration Technology Centre, development of chip technology for smart farming application.

OnePlanet Research Center, a multi-disciplinary collaboration between imec, Universities Radboud, Wageningen and Radboudumc. Focus on the development of e.g. sensor & agriculture.

MESA+, a leading nanotechnology research institute.

StartLife supports Food & Agri startups into leading enterprises.

Farm Technology group, Wageningen Plant Sciences.



Oost NL has partnered with over **900** companies for success in Europe



Top talent



Three Research Universities and five Universities of Applied Sciences educate multi-skilled talent for future challenges in agrifood such as nutrition, biobased materials, agtech and protein transition.

Number of students, East Netherlands

43,000 research university students
85,000 university of applied sciences students
104,000 students in vocational education



students in vocational education

source: CBS, 2018/2019

Wageningen University & Research – for many years ranking world's number 1 food and agriculture university.

Aeres University of Applied Sciences and **Van Hall Larenstein University of Applied Sciences** are also active in the 'green' domain.

Due to its position in Europe, the East Netherlands attracts many international students and researchers. Hosting three international schools, the region offers a quality setting for international talent workers and their families.



Funding

Agriculture and food innovations are funding priorities within the European Union. These funds are an important vehicle to connect your food developments to the European market.

80 billion budget for cooperation in R&D through EU Horizon 2020 program



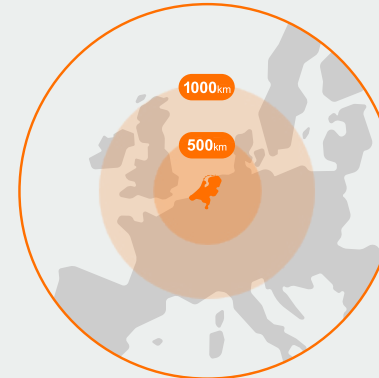
As a partner of the Dutch and EU governments, Oost NL is a qualified intermediary in helping you to access EU, national and regional funding.

255 million regional participation fund
100 million innovation grants & incentives



Market access

95% of Europe's most lucrative consumer markets are just **around the corner**

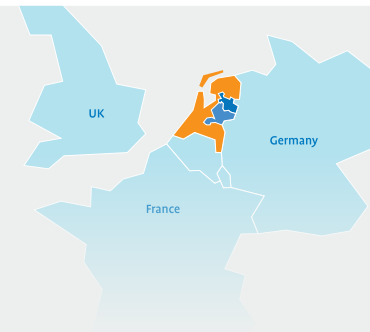


- 244 million consumers within 2-3 days by road
- 170 million consumers within 1-2 days by road



6 International airports in 1.5 hour drive

Beyond being the most wired country in Europe and having the continent's fastest connection speeds, the Netherlands has the world's second-highest penetration of household broadband connections.



Oost NL - Your support for success in business

Oost NL is the economic development agency for East Netherlands.

Invest in Holland

Oost NL works closely together with partners in the Invest In Holland network. Our main partner is the Netherlands Foreign Investment Agency.

We have access to resources -funding, network of business and research partners- to help you succeed in establishing and growing your European business.

Contact:

East Netherlands Development Agency (Oost NL)
Laan van Malkenschoten 40
P.O. Box 1026
7301 BG Apeldoorn, The Netherlands
Tel: +31 (0) 88 667 0100
www.oostnl.com



Jurgen Sonneborn
Senior Advisor Food, International
jurgen.sonneborn@oostnl.nl
Direct phone: +31 (0)628 876 082