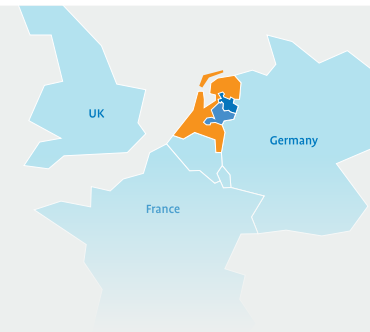




# Pharma Logistics

The Netherlands is a Pharma Logistics powerhouse. Internationally, the Netherlands is a desired discussion partner that tackles problems in an interdisciplinary manner and thinks in terms of total solutions. Health Valley, located in East Netherlands, tops the list of appealing investment regions for many Life Sciences & Health innovators worldwide. **Many potential customers combined with an excellent infrastructure create a perfect location for Pharma Logistics companies.**



## East Netherlands: Part of a great international network

Only in East Netherlands you can find such a strong, vibrant representation of qualified Health business partners, technologies, talent and government support.

If your company is active in the pharmaceutical value chain, East Netherlands is the place to be.

### Vaxxinova

*"The choice for Nijmegen and the East of Netherlands was obvious. Some of our collaboration partners are nearby. We have access to talent and expertise at the universities of Münster, Utrecht and Wageningen. The major airports are easily accessible by train and car. The quality of life in the East Netherlands is excellent, offering a safe living environment, excellent education and good housing at reasonable prices. The East Netherlands Development Agency (Oost NL), together with the Netherlands Foreign Investment Agency (NFIA) supported our establishment and expansions through introductions to their network".*

## M Business climate



**Health Valley** is the largest network in the Netherlands that fosters and supports technological innovations in health care. Health Valley provides a unifying platform for universities, care institutions, companies and governmental authorities to exchange information and collaborate in setting up innovative projects.

The international Health Valley Event in March each year is the largest Health innovation congress in the Netherlands.

Greenfield locations available for XXL distribution centers on the Rhine-Alpine (A15/A12) and the Northsea-Baltic (A1) corridors in the logistics hubs in Tiel, Nijmegen, Emmerich-Montferland-Zevenaar.



### Companies

Many companies in the pharmaceutical industry have chosen to settle here in East Netherlands. Here are some great companies that are currently settled in East Netherlands: Abbott, AbbVie, Allloga, AstraZeneca, DHL, GE Healthcare, MDxHealth, Movianto, Nanomi, Polar Logistics, Symeres, Synthron, Quirem Medical, Vaxxinova and Zoll Medical.

## Business support

East Netherlands has a strong ecosystem for pharmaceutical companies to thrive and grow their business in Europe. Numerous partners in the ecosystem are keen on supporting you to grow your business in the region.

**Shared research facilities** provides access to state-of-the-art facilities for scientists from industry, knowledge institutes and universities, such as test facilities for temperature-controlled transport.

**Logistics Valley** is a collaboration between government, education and entrepreneurs. This was set up to stimulate economic development along the Gelderland corridor by strengthening logistics activities.

**Holland International Distribution Council (HIDC)** represents and promotes the Dutch logistics industry.

**3** logistics hotspots in Europe's top 20

## Infrastructure

### Synchromodal Transport

Directly connected to the Baltic and Alpine Rhine Corridor. The shortest connection between Rotterdam/Amsterdam and Germany, Poland, Baltics, Nordics, Austria, Switzerland and Italy.

East Netherlands is readily accessible by water with 8 strategically located inland (containers) terminals, like CTT Hengelo and BCTN Nijmegen. Operational rail network with direct connection to (barge/container) terminals and logistic sites.



**#1** Road connection NL - Germany



**#1** TEU transport gateway to EU

**14,3%** NL TEU via East NL



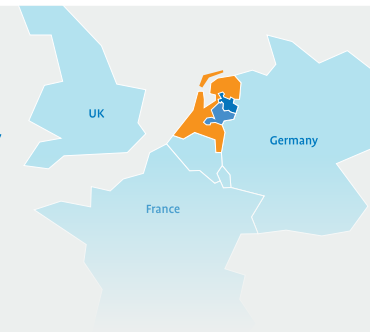
**75%** of all railcargo between NL - Germany



**6** International airports in 1.5 hour drive



# Oost NL has successfully supported nearly 1,000 companies from all over the world

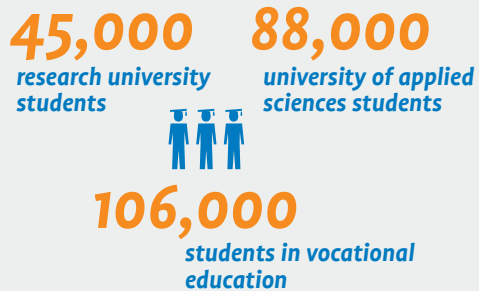


## Top talent



The region has leading entrepreneurial academic research centers: Wageningen University & Research (Food Research), Radboud University & Medical Center, Nijmegen (Life Sciences & Health) & University of Twente Enschede (Medtech & Technical Medicine). The Universities and Applied Sciences Institutes in the Netherlands strongly support relevant scientific studies that are closely linked to this growing market.

### Number of students, East Netherlands



source: CBS, 2019/2020

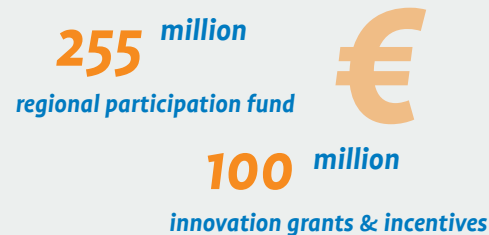
Due to its position in Europe, East Netherlands attracts many international students and researchers. Hosting three international schools, the region offers a quality setting for international talent workers and their families.

## Funding

Innovation in Life Sciences & Health is one of the funding priorities within the European Union (EU). These funds are also an important vehicle to connect our pharmaceuticals ecosystem to other important hot spots in Europe. The EU has made significant investments in pharmaceuticals in recent years.



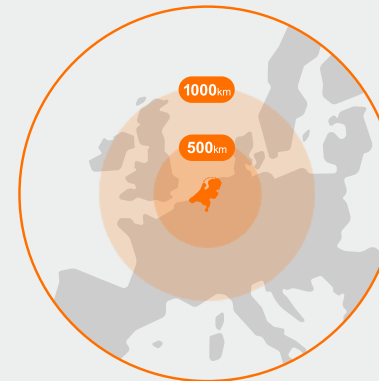
As a partner of the Dutch and EU governments, Oost NL is a qualified intermediary in helping you to access EU, national and regional funding.



## Market access

The Netherlands is a gateway to European markets, with an open market approach, business-friendly fiscal climate, and a multilingual workforce.

**95%** of Europe's most lucrative consumer markets are just around the corner



- 244 million consumers within 2-3 days by road
- 170 million consumers within 1-2 days by road

## Oost NL - Your support for success in business

Oost NL is the economic development agency for East Netherlands.

### Invest in Holland

Oost NL works closely together with partners in the Invest In Holland network. Our main partner is the Netherlands Foreign Investment Agency.

We have access to resources - funding, network of business and research partners- to help you succeed in establishing and growing your European business.

### Contact:

East Netherlands Development Agency (Oost NL)  
Laan van Malkenschoten 40  
P.O. Box 1026  
7301 BG Apeldoorn, The Netherlands  
Tel: +31 (0) 88 667 0100  
www.oostnl.com



**Susan van Boxtel**  
Team Manager Health & Food, International  
susan.vanboxtel@oostnl.nl  
Direct phone: +31 (0) 618 41 67 45